

Reducing Cr⁶⁺ in electroplating wastewater with *Bacillus cereus* strain B₁

Jennifer Andrea Moreno-Benavides¹, Enrique Javier Peña-Salamanca¹,
Neyla Benítez-Campo^{1,*}

Edited by

Juan Carlos Salcedo-Reyes

(salcedo.juan@javeriana.edu.co)

1. Universidad del Valle, Faculty of Exact and Natural Sciences, Department of Biology, Research Group of Biology of Plants and Microorganisms, Calle 13 No. 100-00 Santiago de Cali, Colombia, Postal Code: 76001.

* neyla.benitez@correounivalle.edu.co

Received: 16-04-2018

Accepted: 14-11-2018

Published on line: 18-02-2019

Citation: Moreno-Benavides JA, Peña-Salamanca EJ, Benítez-Campo N. Reducing Cr⁶⁺ in electroplating wastewater with *Bacillus cereus* strain B₁, *Universitas Scientiarum*, 24 (1): 73-89, 2019. doi: 10.11144/Javeriana.SC24-1.rcie

Funding:

Universidad del Valle.

Electronic supplementary material:

N.A.



Abstract

In this study *Bacillus cereus* was used to evaluate the Cr⁶⁺ reducing capacity in electroplating effluents. The Cr⁶⁺ bioreduction assays were carried out using real wastewater (RWW) from an electroplating plant and artificial wastewater (AWW), with and without added glucose. The AWW was prepared using Ni, Zn, Cu, Pb, and Cr salts, simulating RWW concentrations. The Cr⁶⁺ concentration and bacterial growth were monitored three times a day for the duration of five days. Also, were evaluated the effects of wastewater on *B. cereus* B₁ morphology using scanning electron microscopy. Cr⁶⁺ reduction percentage of 100 % was reached for AWW containing glucose, of 71 % for AWW without glucose, of 75.6 % for RWW with glucose, and of 31.7 % for RWW without glucose. Despite the low reduction percentage obtained for RWW without glucose, concentrations of ± 0.14 mg/L of Cr⁶⁺ were reached, which were within allowed limits (0.5 mg/L of Cr⁶⁺). Electron Microscopy showed alterations in the bacterial cell wall and a decrease in size, mainly in the bacteria exposed to RWW. The results allow us to propose *B. cereus* B₁ as a promising microorganism for use in the bioremediation of effluents containing Cr⁶⁺.

Keywords: Bioremediation; industrial effluents; glucose; heavy metals; metal plating.

Introduction

Urbanization is an accelerating global phenomenon. In developing countries, vehicle density, construction, and metal emissions increase with urban growth, leading to an overall lifestyle change [1]. Metals are contaminants that, due to their prevalence, toxicity, and persistence, are of concern in any environmental system [1]. These pollutants originate from varied industrial activities such as

electroplating, tanning of hides, metallurgy, photography, battery production, car workshops, paint production, etc. Metal toxicological effects are relevant to both ecological and public health, since they are associated with respiratory diseases, skin diseases [2], and DNA damage, which increases carcinogenic risk [3].

Electroplating is a metalwork industry activity in which the treatment of metal surfaces is carried out through chemical and/or electrochemical processes [4]. It involves a sequence of pretreatment, coating and conversion baths, that lead to several types of wastewaters containing high amounts of metals, principally zinc, iron and hexavalent chromium [4]. Chromium (Cr) species are also waste byproducts of electroplating activities. Cr exists at valence states ranging from -2 to +6, with the dominant forms in the environment being Cr⁶⁺ and Cr³⁺ [5]. Whereas Cr³⁺ has a lower toxicity and lower bioavailability due to its impermeability to biological membranes, Cr⁶⁺ is toxic to biological systems due to its mutagenic, carcinogenic, and teratogenic effects, [5]. Consequently, a Chromium waste discharge policy has been locally set forth and a permissible chromium concentration in wastewater was set at 0.5 mg/L for discharge into clear water bodies or into the public sewer system in Colombia [6].

Adhering to this regulation, certain industries have implemented conventional methods for removing heavy metals, such as chemical precipitation, chemical oxide reduction, filtration, ionic exchange, and electrochemical treatment [7]. However, in conventional treatments the reduction of Cr⁶⁺ may be incomplete and the chemicals used are hazardous to the environment, besides being costly [4]. Developing efficient, low-cost technologies such as bioremediation is, thus, necessary. These new technologies should provide the possibility of degrading, removing, or reducing pollutants to non-toxic forms, or to forms that are less toxic to human health and the environment [8].

Microorganisms of the genus *Bacillus* have been recognized for their ability to reduce Cr⁶⁺ [9-13]. Specifically, it has been found that the B₁ strain of *B. cereus*, isolated from tannery effluent water, tolerates up to 8 000 mg/L of Cr⁶⁺ and reduces Cr⁶⁺ at a concentration of 100 mg/L in Luria-Bertani (LB) medium (unpublished) with 100 % efficiencies Tripathi *et al.* [14], reported the ability of the *B. cereus* strain RMLAU1 to tolerate and bioremediate Cr⁶⁺ at a concentration of 200 mg/L and pentachlorophenol (PCP) at a concentration of 500 mg/L, simultaneously. Taking this into account, this study intends to evaluate the ability of *B. cereus* B₁ to reduce Cr⁶⁺ present in the effluents of an electroplating plant.

Materials and methods

Sampling and sample processing

Wastewater samples were taken from the effluents of an electroplating facility located in the city of Cali, Departamento del Valle del Cauca, Colombia. Samples were stored in sterile glass jars previously washed with 10 % HNO₃ (J.T. Baker), then transported in coolers at 4 °C to the Microbiological Research laboratory at the Universidad del Valle, where they were processed within six hours. Effluent pH and temperature were measured at the sampling site. The pH of wastewater was later adjusted to 7.5 ± 0.2 using Tris buffer, which was seen during previous research to be optimal for B₁ native strain growth.

Reduction bioassays

Bioassays were performed using a wild strain of *B. cereus*, which was previously identified using the BD BBL CRYSTAL GP kit. This was complemented using amplification (PCR) of the 16S rRNA gene region, from a bacterial colony grown in solid Luria-Bertani medium. The primers 16S-F (5'- AGAGTTT'GATCCTGGCTCAG-3') and 16S-R (5'GGCTACCTTGTACGACT T-3') were used. PCR cocktails underwent a “touch-down” thermic profile. PCR products were visualized in a 1.5 % agarose gel with TBE buffer stained with SYBR[®]Safe (Invitrogen). The sequencing process was performed by MACROGEN (Korea). 16S rRNA gene sequences were compared with known sequences from the GenBank database to identify the most similar sequence.

Bioassays were carried out in triplicate using real wastewater (RWW) from an electroplating facility with a Cr⁶⁺ concentration of 5 mg/L, as well as artificial wastewater (AWW), with and without glucose (Merck). The water was sterilized by filtration through a nitrocellulose membrane with 0.2 μm pore size (Sartorius Stedim Biotech). The glucose concentration for all bioassays was 0.2 g/L. In order to determine whether other factors could influence the Cr⁶⁺ reduction process in RWW, AWW was prepared by dissolving the following: 14.11 mg/L NiSO₄·7H₂O (Merck), 0.07 mg/L ZnSO₄·7H₂O (Merck), 0.15 mg/L CuSO₄·5H₂O (Merck), 0.21 mg/L Pb·(NO₃)₂ (Merck), and 5.25 mg/L K₂Cr₂O₇ (Merck). These concentrations were established based on prior physicochemical analysis on RWW obtained from the electroplating facility.

Each bioassay consisted of a 250 mL Erlenmeyer flask containing 50 mL of wastewater and a bacterial inoculum. The inoculum was prepared using colonies from a master-seed lot, seeded in 1 000 mL Luria-Bertani medium

(Becton Dickinson AB) incubated at 30 °C for 17 hours under constant 125 rpm agitation (126R Incubator Shaker Stack, New Brunswick Scientific). After the culture grew, it was transferred to 12 conical tubes (Falcon) containing 50 mL each, which were centrifuged at 4 000 rpm for 10 min (Hettich Universal 32R centrifuge). The supernatant was discarded, and the pellet was used as inoculum. For each treatment a chemical control containing 50 mL of wastewater with and without glucose was included. A total of 16 Erlenmeyer flasks were prepared and incubated at 30 °C and 125 rpm (126R Incubator Shaker Stack, New Brunswick Scientific).

Three independent samples were taken, and three assays were carried out for five days. The Cr⁶⁺ concentration and bacterial growth were measured three times per day, and the pH was determined at the beginning and end of each trial. The Cr⁶⁺ concentration was measured by spectrophotometry using 1,5-difenilcarbazine at 540 nm, using HACH DR 890 equipment [15]. Bacterial growth was measured using a spectrophotometer, quantifying optical density at 600 nm (Thermo Spectronic Genesys 20, digital UV VIS).

Data analysis

Results of Cr⁶⁺ reduction percentage and bacterial growth over time were analyzed graphically. Significant differences were evaluated using an analysis of variance with a 2² factorial design with blocking. When statistically significant differences were found, a post-hoc Tukey test was used. All statistical analyses were conducted with the R Software.

Scanning electron microscopy

A total of 2 mL from each assay and 2 mL from pure *B. cereus* B₁ culture, (control) grown in liquid medium (LM) for 24 hours, were taken. These samples were centrifuged at 4 000 rpm for 10 min (Spectrafuge 16M centrifuge), discarding the supernatant. Microorganisms were later fixed in a glutaraldehyde solution (Carlo Erba) at 2.5 % and 0.1 M 7.2 pH phosphate buffer for 12 hours at 4 °C. Fixed samples were then washed twice in a phosphate buffer and dehydrated at 4 °C for 10 min in increasing ethanol concentrations (Sigma-Aldrich) ranging from 30 % to 99.8 %. Samples were immediately dried by adding hexamethyldisiloxane (Sigma-Aldrich) for 30 seconds and covered with a gold film for immediate observation.

Results and discussion

Results of the RWW physicochemical analysis are shown in **Table 1**. These parameters indicated chromium and nickel pollution, with values above

Table 1. Physicochemical analysis of wastewater from an electroplating plant.*Maximum Allowable Value for the discharge of wastewaters from electroplating coating activities, according to the Colombian environmental standards [6].

Parameter	Result	MAV*
Temperature (°C)	24	40
pH (Units)	6.0	6 - 9
Biological Oxygen Demand - BOD (mg/L O ₂)	6.3	100
Chemical Oxygen Demand - COD (mg/L O ₂)	16.1	250
Settleable Solids Suspended - SSES (mg/L)	< 0.1	2
Total Suspended Solids - SST (mg/L)	4.40	50
Sulfates (mg/L)	15.7	-
Lead (mg/L)	< 0.210	0.20
Copper (mg/L)	0.149	1
Zinc (mg/L)	0.067	3
Nickel (mg/L)	14.11	0.5
Cr ⁶⁺ (mg/L)	5.24	0.5

the maximum permissible value according to Colombian environmental standards [6]. We also observed low biochemical oxygen demand and chemical oxygen demand levels, which means that the bacterium could hardly carry out metabolic processes as it is a heterotrophic organism.

Treatments with glucose resulted in a higher reduction percentage of Cr⁶⁺ concentration than treatments without glucose. **Fig. 1** shows averages of Cr⁶⁺ reduction percentage in treatment replicates and bacterial growth during

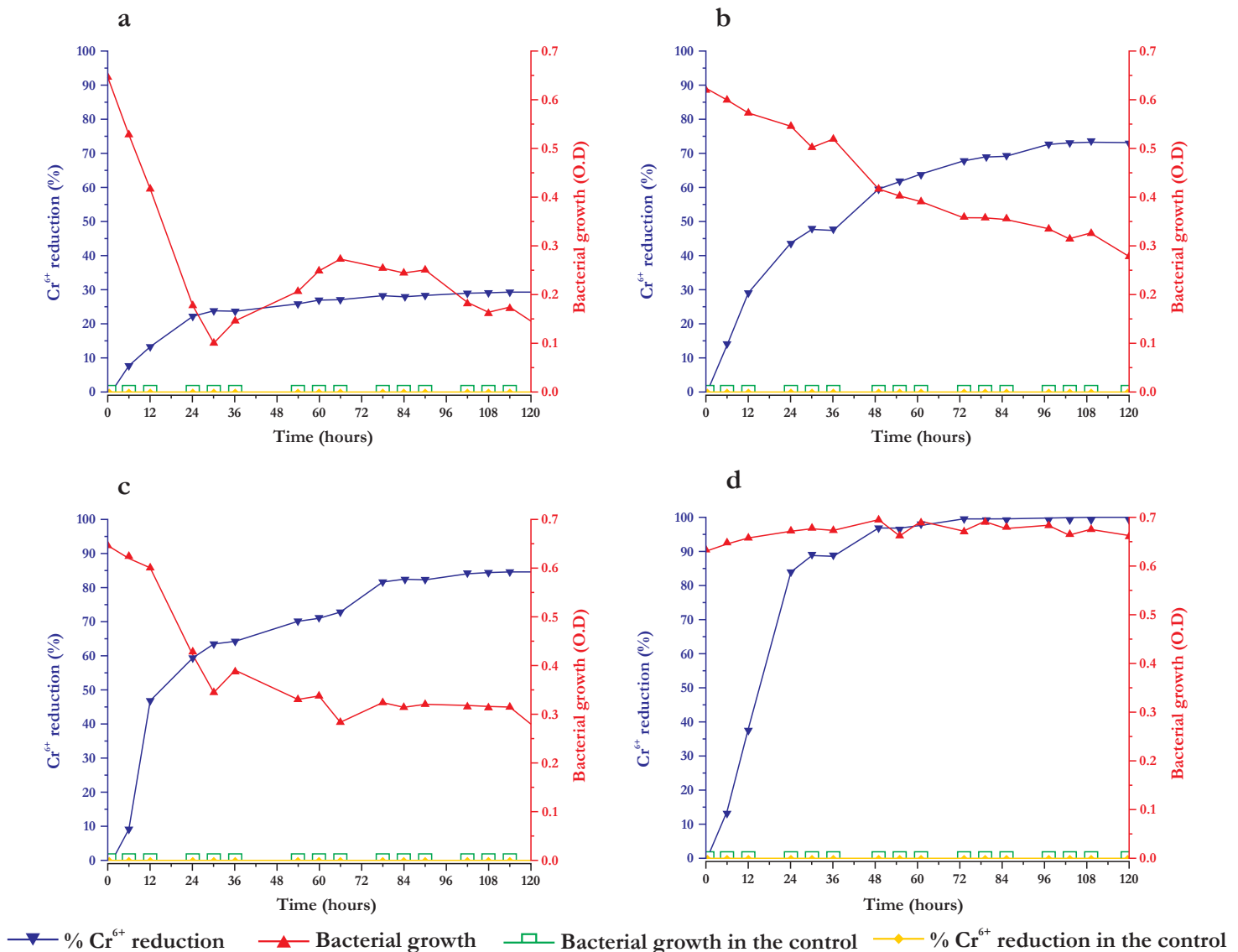


Figure 1. Percent of Cr⁶⁺ reduction and bacterial growth in treatments and controls: (a) real wastewater. (b) artificial wastewater. (c) real wastewater with glucose. (d) artificial wastewater with glucose. Due to the bacterial growth and the Cr(VI) reduction in the controls did not change, both are represented on the horizontal axis.

120 h of incubation. Cr⁶⁺ was reduced by 24 % during the first 30 h using RWW (Fig. 1a), reaching 29.3 % reduction at the end of the assay. Reduction was 72 % using AWW (Fig. 1b). In assays with glucose there was 83.3 % Cr⁶⁺ reduction after 78 h using RWW, and 100 % reduction using AWW after 48 h (Fig. 1c and 1d).

In bioassays 2 and 3 (data not shown) we observed similar results to bioassay 1 (Fig. 1), with lower Cr^{6+} reduction values. Using RWW, the observed Cr^{6+} reductions were 29 %, after 54 h and 37.2 %, after 78 hours, while using AWW we obtained a Cr^{6+} reduction of 64.2 % after 78 h and of 77.6 % after 114 h. Ostensibly, the presence of glucose accelerated the Cr^{6+} reduction process. We obtained a 74.4 % reduction using RWW after 102 h and 69.2 % after 78 h, whereas using AWW with glucose we obtained 100 % reduction after 102 h and 78 h. Tripathi *et al.* [16], point out that among different carbon sources (glucose, maltose and sucrose), glucose was the easiest metabolizable sugar. Moreover, this molecule allows the conversion of NADP to its reduced form, which then provides reduced metabolites [17]. Glucose is also an important source of energy, and along with other trace elements, increases growth of live cells and facilitates metal bioabsorption [18].

The statistical analysis showed no significant differences between bioassays for Cr^{6+} reduction ($p > 0.05$), but there were significant differences between water types ($p < 0.05$), glucose presence ($p < 0.05$), and the interaction effect of water type - glucose ($p < 0.05$) (Table 2). The post-ANOVA Tukey analysis showed that there was a difference of -0.4618 for wastewater type (real/artificial), and of 0.511 for glucose (presence/absence), indicating that the factors artificial water and glucose presence resulted in higher Cr^{6+} reduction compared with real water and glucose absence.

Despite AWW being prepared in similar concentrations to those reported in the physicochemical analysis (Table 1), it resulted in a higher Cr^{6+} reduction percentage than when using RWW. This is due to AWW being prepared from only sulfate and nitrate salts, which do not compete with Cr^{6+} as electron acceptors under aerobic conditions, even at concentrations of 40 mg/L and 80 mg/L. [19] Industrial effluents are characterized by having a great variety of ionic components (including cations and anions), which have a negative effect on metal accumulation [20].

It has also been reported that the presence of Pb^{2+} , Cu^{2+} , and Zn^{2+} , even at low concentrations, is limiting in terms of the affinity of said metals for functional groups present on the cell surface [21]. It has been found, for example, that in *B. cereus* the carboxyl, amide and phosphate groups have affinity for Cr^{6+} , and the amide and carboxyl groups have affinity for Ni^{2+} [22]. Given that in this study the concentrations of Cr^{6+} and Ni^{2+} were the highest, and that they share an affinity for the same functional groups, the competition between these two ions probably affected Cr^{6+} reduction.

Table 2. ANOVA 2² factorial design with blocking.

	Df	Sum Sq	Mean Sq	F value	Pr (> F)
Bioassay	2	0.0114	0.0057	1.142	0.3326
Wastewater	1	1.9195	1.9195	384.969	< 2 10 16
Glucose	1	2.3497	2.3497	471.256	< 2 10 16
Water type* Glucose	1	0.023	0.023	4.617	0.0398
Residuals	30	0.1496	0.005		

The Cr⁶⁺ reduction rate showed an inverse relationship with respect to cell concentration (Fig. 1), mainly in the treatments with AWW and RWW with and without glucose, as was reported by Wang and Xiao [23]. This is because Cr⁶⁺ reduction can be inhibited by its toxicity, as it causes damage to DNA and interrupts normal cell replication [24]. However, some studies have shown that *B. cereus* exhibits resistance to multiple heavy metals (Pb, As, Hg, Zn, Co and Ni) [25], and despite a low growth rate, the cells that do grow are capable of continuously removing metals through internal detoxification mechanisms [26].

The toxic effects of RWW and AWW on the bacterium exposed to the different treatments can be observed in Fig. 2. In the control without Cr⁶⁺ (Fig. 2a) the microorganism had an elongated shape and smooth surface, whereas in RWW (Fig. 2b-2c) cells became smaller, rounded and with some rugosities on the cell wall. Although in the AWW treatment (Fig. 2d-2e) the cell kept its elongated shape, there was a decrease in size and unequal edges on the walls.

Although *B. cereus* B₁ presented morphological changes in all treatments, the most drastic were observed in RWW. It seems these changes are the result of a resistance mechanism to medium toxicity [22]. Part of this mechanism consists in alterations of the cell membrane structure and size of the microbial cell [21], which are vital to sustain metabolic activity and to survive the absorption of chromium and other metals from the effluent [22].

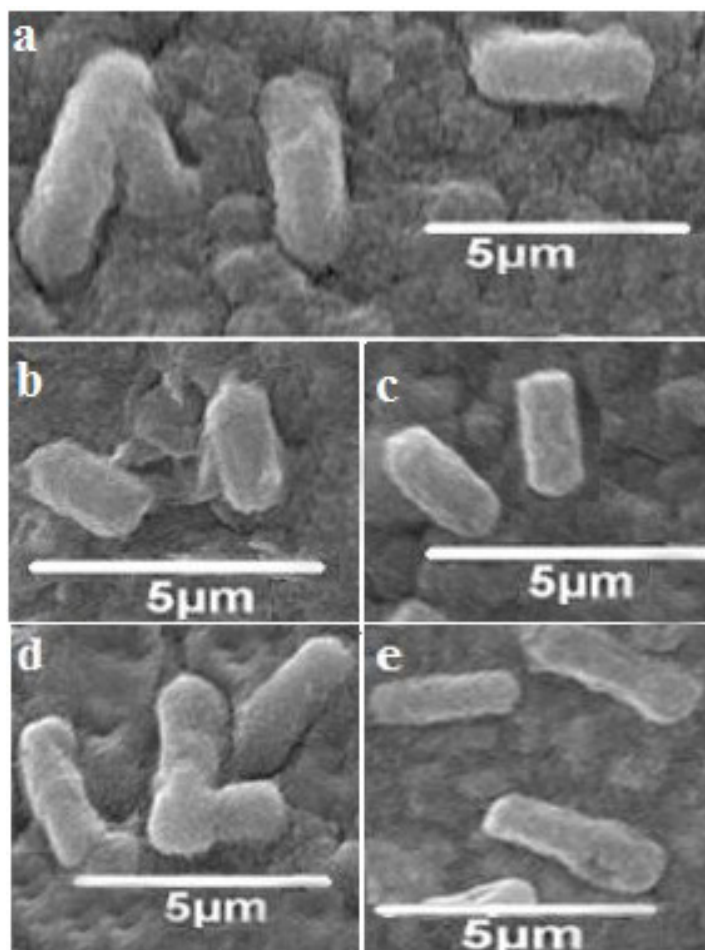


Figure 2. Scanning electron microscopy showing the effect on the morphology and the size of *B. cereus* B₁ cells: (a) control without Cr⁶⁺; (b) real wastewater; (c) real wastewater enriched with glucose; (d) artificial wastewater; (e) artificial wastewater enriched with glucose.

It has also been determined that pH can strongly affect the properties of functional groups (carboxyl, phosphate, amine, among others) that are on the cell surface, and of metallic ions in solution [26]. As was reported by Liu *et al.* [19], we observed an increase in pH in the treatment with RWW (Table 3). The reason is that an electron donor is required (endogenous in this case) for the reduction of Cr⁶⁺ to Cr³⁺, which results in a gradual decrease in the oxidation/reduction potential, and in consequence in a pH increase [27].

On the other hand, in the treatments with glucose we observed a pH decrease (Table 3). According to Chaturvedi [28], this occurs as a result of metabolite (organic acids) secretion by the cells. It has also been proposed that this pH decrease is the result of the formation and precipitation of chromium complexes [29]. It is therefore necessary to consider the role that glucose plays in bacterial metabolism, as well as the mechanisms implicated in the reduction and resistance to Cr⁶⁺ [19].

Table 3. pH changes during the bioassays.

Treatment	Initial pH	Final pH
RWW	7.6	8.2
Control	7.6	6.9
RWW+G	7.6	5.1
Control	7.6	7.1
AWW	7.6	7.5
Control	7.6	6.7
AWW+G	7.6	5.6
Control	7.6	6.9

Conclusions

This study reports on the ability of *B. cereus* B₁ to reduce Cr⁶⁺ present in wastewaters of an electroplating plant, despite the toxicity that this type of effluent represented for this bacterium. Although the AWW was prepared using the same metals at similar concentrations to those found in RWW, the latter showed lower Cr⁶⁺ reduction efficiency than AWW, which demonstrates the existence of other components that interfere with the Cr⁶⁺ reduction process by *B. cereus* B₁ in RWW.

Although treatments with glucose reached higher Cr⁶⁺ reduction efficiencies than those without glucose, Cr⁶⁺ concentrations of ± 0.14 mg/L were reached using RWW, a value which is within allowable levels (0.5 mg/L) set by Colombian regulations. This allows us to propose *B. cereus* B₁ as a promising microorganism in the bioremediation of industrial effluents contaminated with Cr⁶⁺.

Acknowledgements

The authors wish to acknowledge to the Universidad del Valle for financing this research. We thank: Walter Agudelo for allowing us to sample at the

Induzinc Ltda. Plant. Alexander Mora and Alexander Ramírez for advising us during the laboratory assays. Dr. Philip A. Silverstone-Sopkin, for his comments and English edition of the article.

Conflict of interest

The authors declare that there are no conflicts of interest.

References

- [1] Kumar M, Gogoi A, Kumari D, Borah R, Das P, Mazumder P, Kumar V. Review of perspective, problems, challenges, and future scenario of metal contamination in the urban environment, *Journal of Hazardous, Toxic, and Radioactive Waste*, 21(4): 1-16, 2017.
doi: [10.1061/\(ASCE\)HZ.2153-5515.0000351](https://doi.org/10.1061/(ASCE)HZ.2153-5515.0000351)
- [2] Mohanty M, Patra HK. Attenuation of chromium toxicity by bioremediation technology, *Reviews of Environmental Contamination and Toxicology*, 210: 1-34, 2011.
doi: [10.1007/978-1-4419-7615-4_1](https://doi.org/10.1007/978-1-4419-7615-4_1)
- [3] Sedman RM, Beaumont J, McDonald TA, Reynolds S, Krowech G, Howd R. Review of the evidence regarding the carcinogenicity of hexavalent chromium in drinking water, *Journal of Environmental Science and Health, Part C*, 24(1): 155-182, 2006.
doi: [10.1080/10590500600614337](https://doi.org/10.1080/10590500600614337)
- [4] Hackbarth FV, Maass D, De Souza AAU, Vilar VJP, De Souza SMA. Removal of hexavalent chromium from electroplating wastewaters using marine macroalga *Pelvetia canaliculata* as natural electron donor, *Chemical Engineering Journal*, 290: 477-489, 2016.
doi: <http://dx.doi.org/10.1016/j.cej.2016.01.070>
- [5] Thatoi H, Das S, Mishra J, Rath BP, Das N. Bacterial chromate reductase, a potential enzyme for bioremediation of hexavalent chromium: a review, *Journal of Environmental Management*, 146: 383-399, 2014.
doi: [10.1016/j.jenvman.2014.07.014](https://doi.org/10.1016/j.jenvman.2014.07.014)
- [6] Ministerio de Ambiente y Desarrollo Sostenible. Resolución número 0631: Por el cual se establecen los parámetros y los valores límites máximos permisibles en vertimientos puntuales a cuerpos de aguas superficiales y a sistemas de alcantarillado público y se dictan otras disposiciones, Colombia. 2015.
Retrieved from: https://docs.supersalud.gov.co/PortalWeb/Juridica/OtraNormativa/R_MADS_0631_2015.pdf

- [7] Zouboulis AI, Rousou EG, Matis KA, Hancock IC. Removal of toxic metals from aqueous mixtures. Part 1: Biosorption, *Journal of Chemical Technology and Biotechnology*, 74(5): 429-436, 1999.
doi: [10.1002/\(SICI\)1097-4660\(199905\)74:5<429::AID-JCTB62>3.0.CO;2-9%23](https://doi.org/10.1002/(SICI)1097-4660(199905)74:5<429::AID-JCTB62>3.0.CO;2-9%23)
- [8] Garg SK, Tripathi M, Srinath T. Strategies for chromium bioremediation of tannery effluent, *Reviews of Environmental Contamination and Toxicology*, 217: 75-140, 2012.
doi: [10.1007/978-1-4614-2329-4_2](https://doi.org/10.1007/978-1-4614-2329-4_2)
- [9] Zahoor A, Rehman A. Isolation of Cr(VI) reducing bacteria from industrial effluents and their potential use in bioremediation of chromium containing wastewater, *Journal of Environmental Sciences (China)*, 21(6): 814-820, 2009.
[https://doi.org/10.1016/S1001-0742\(08\)62346-3](https://doi.org/10.1016/S1001-0742(08)62346-3)
- [10] Chen Z, Huang Z, Cheng Y, *et al.* Cr(VI) Uptake mechanism of *Bacillus cereus*, *Chemosphere*, 87(3): 211-216, 2012.
doi: [10.1016/j.chemosphere.2011.12.050](https://doi.org/10.1016/j.chemosphere.2011.12.050)
- [11] Camargo FA, Okeke B, Bento F, Frankenberger W. Hexavalent chromium reduction by immobilized cells and the cell-free extract of *Bacillus* sp. ES 29, *Bioremediation Journal*, 8(1-2): 23-30, 2004.
doi: [10.1080/10889860490453140](https://doi.org/10.1080/10889860490453140)
- [12] Elangovan R, Abhipsa S, Rohit B, Ligy P, Chandraraj K. Reduction of Cr(VI) by a *Bacillus* sp., *Biotechnology Letters*, 28(4): 247-52, 2006.
doi: [10.1007/s10529-005-5526-z](https://doi.org/10.1007/s10529-005-5526-z)
- [13] Zhao C, Yang Q, Chen W, Teng B. Removal of hexavalent chromium in tannery wastewater by *Bacillus cereus*, *Canadian Journal of Microbiology*, 58(1): 23-28, 2012.
doi: [10.1139/W11-096](https://doi.org/10.1139/W11-096)
- [14] Tripathi M, Mishra SS, Tripathi VR, Garg SK. Predictive approach for simultaneous biosorption of hexavalent chromium and pentachlorophenol degradation by *Bacillus cereus* RMLAU1, *Journal of Biotechnology*, 10(32): 6052-6061, 2011.
doi: [10.5897/AJB10.2490](https://doi.org/10.5897/AJB10.2490)

- [15] American Public Health Association (APHA), American Water Works Association (AWWA), and Water Environment Federation (WEF). Standard methods for the examination of water and wastewater, *Joint Editorial Board*, Washington D.C., USA 1898.
- [16] Tripathi M, Garg SK. Co-remediation of pentachlorophenol and Cr⁶⁺ by free and immobilized cells of native *Bacillus cereus* isolate: spectrometric characterization of PCP dechlorination products, bioreactor trial and chromate reductase activity, *Process Biochemistry*, 48(3): 496-509, 2013.
doi: [10.1016/j.procbio.2013.02.009](https://doi.org/10.1016/j.procbio.2013.02.009)
- [17] Fulladosa E, Desjardin V, Murat JC, Gourdon R, Villaescusa I. Cr(VI) reduction into Cr(III) as a mechanism to explain the low sensitivity of *Vibrio fischeri* bioassay to detect chromium pollution, *Chemosphere*, 65(4): 644-650, 2006.
doi: [10.1016/j.chemosphere.2006.01.069](https://doi.org/10.1016/j.chemosphere.2006.01.069)
- [18] Wang J, Chen C. Biosorption of heavy metals by *Saccharomyces cerevisiae*: a review, *Biotechnology Advances*, 24(5): 427-451, 2006.
doi: [10.1016/j.biotechadv.2006.03.001](https://doi.org/10.1016/j.biotechadv.2006.03.001)
- [19] Liu YG, Xu WH, Zeng GM, Li X, Gao H. Cr⁶⁺ reduction by *Bacillus* sp. isolated from chromium landfill, *Process Biochemistry*, 41(9): 1981-1986, 2006.
doi: [10.1016/j.procbio.2006.04.020](https://doi.org/10.1016/j.procbio.2006.04.020)
- [20] Suh JH, Kim DS. Effects of Hg²⁺ and cell conditions on Pb²⁺ accumulation by *Saccharomyces cerevisiae*, *Bioprocess Engineering*, 23(4): 327-329, 2000.
doi: [10.1007/s004499900149](https://doi.org/10.1007/s004499900149)
- [21] Fosso-Kankeu E, Mulaba-Bafubiandi AF, Mamba BB, Barnard TG. Prediction of metal-adsorption behaviour in the remediation of water contamination using indigenous microorganisms, *Journal of Environmental Management*, 92(10): 2786-2793, 2011.
doi: [10.1016/j.jenvman.2011.06.025](https://doi.org/10.1016/j.jenvman.2011.06.025)
- [22] Naik U, Srivastava S, Thakur I. Isolation and characterization of *Bacillus cereus* IST105 from electroplating effluent for detoxification of hexavalent chromium, *Environmental Science Pollution and Research International*, 19(7): 3005-3014, 2012.
doi: [10.1007/s11356-012-0811-6](https://doi.org/10.1007/s11356-012-0811-6)

- [23] Wang YT, Xiao C. Factors affecting hexavalent chromium reduction in pure cultures of bacteria, *Water Research*, 29(11): 2467-2474, 1995.
doi: [10.1016/0043-1354\(95\)00093-Z](https://doi.org/10.1016/0043-1354(95)00093-Z)
- [24] Wang YT. Microbial reduction of chromate. In: D.R. Lovley, ed. Environmental microbe-metal interactions, American Society for Microbiology Press, Washington, D.C., USA 2000. Chapter
doi: [10.1128/9781555818098.ch10](https://doi.org/10.1128/9781555818098.ch10)
- [25] Tripathi M, Vikram S, Jain RK, Garg SK. Isolation and growth characteristics of chromium (VI) and pentachlorophenol tolerant bacterial isolate from treated tannery effluent for its possible use in simultaneous bioremediation, *Indian Journal of Microbiology*, 51(1): 61-69, 2011.
doi: [10.1007/s12088-011-0089-2](https://doi.org/10.1007/s12088-011-0089-2)
- [26] Malik A. Metal bioremediation through growing cells, *Environment International*, 30(2): 261-278, 2004.
doi: [10.1016/j.envint.2003.08.001](https://doi.org/10.1016/j.envint.2003.08.001)
- [27] Liu YG, Feng BY, Fan T, Zhou HZ, Li X. Tolerance and removal of chromium (VI) by *Bacillus* sp. strain YB-1 isolated from electroplating sludge, *Transactions of Nonferrous Metals Society of China*, 18(2): 480-487, 2008.
doi: [10.1016/S1003-6326\(08\)60085-0](https://doi.org/10.1016/S1003-6326(08)60085-0)
- [28] Chaturvedi MK. Studies on chromate removal by chromium-resistant *Bacillus* sp. isolated from tannery effluent, *Journal of Environmental Protection*, 2: 76-82, 2011.
doi: [10.4236/jep.2011.21008](https://doi.org/10.4236/jep.2011.21008)
- [29] Camargo FA, Okeke BC, Bento FM, Frankenberger WT. In vitro reduction of hexavalent chromium by a cell-free extract of *Bacillus* sp. ES 29 stimulated by Cu²⁺, *Applied Microbiology and Biotechnology*, 62: 569-573, 2003.
doi: [10.1080/10889860490453140](https://doi.org/10.1080/10889860490453140)

Reducción de Cr⁶⁺ en aguas residuales de galvanoplastia con una cepa de *Bacillus cereus* B₁

Resumen. En este estudio se utilizó *Bacillus cereus* para evaluar la capacidad de reducción de Cr⁶⁺ en efluentes de galvanoplastia. Los ensayos de biorreducción de Cr⁶⁺ se llevaron a cabo usando agua residual real (RWW) proveniente de una planta de galvanoplastia, y agua residual artificial (AWW), con y sin adición de glucosa. El AWW se preparó usando sales de Ni, Zn, Cu, Pb y Cr, simulando concentraciones de RWW. La concentración de Cr⁶⁺ y el crecimiento bacteriano se monitorearon 3 veces al día durante 5 días. También se evaluaron los efectos del agua residual en la morfología de *B. cereus* B₁, usando microscopía electrónica de barrido. Se alcanzó una reducción del 100 % en AWW con glucosa, de 71 % en AWW sin glucosa, de 75.6 % en RWW con glucosa y de 31.7 % en RWW sin glucosa. A pesar del bajo porcentaje de reducción obtenido en RWW con glucosa, se alcanzaron concentraciones de ± 0.14 mg/L of Cr⁶⁺, que están dentro de los límites permitidos (0.5 mg/L de Cr⁶⁺). La microscopía electrónica mostró alteraciones en la pared de la célula bacteriana y una disminución en tamaño, principalmente en las bacterias expuestas a RWW. Los resultados nos permiten proponer a *B. cereus* B₁ como un microorganismo promisorio para uso en biorremediación de efluentes que contengan Cr⁶⁺.

Palabras clave: biorremediación; efluentes industriales; glucosa; metales pesados; galvanoplastia.

Redução do Cr⁶⁺ em águas residuais de galvanoplastia com cepa de *Bacillus cereus* B₁

Resumo: Neste estudo se utilizou *Bacillus cereus* para avaliar a capacidade de redução do Cr⁶⁺ em efluentes de galvanoplastia. Os ensaios de biorredução de Cr⁶⁺ se realizaram usando água residual real (RWW) proveniente de uma planta de galvanoplastia, e água residual artificial (AWW), com e sem adição de glicose. A AWW se preparou usando sais de Ni, Zn, Cu, Pb y Cr, simulando concentrações de RWW. As concentrações de Cr⁶⁺ e o crescimento bacteriano se monitoram 3 vezes ao dia durante 5 dias. Também se avaliaram os efeitos da água residual na morfologia de *B. cereus* B₁, usando microscopia eletrônica de varredura. Obteve-se uma redução de 100 % em AWW com glicose, de 71 % em AWW sem glicose, de 75.6 % em RWW com glicose e de 31.7 % em RWW sem glicose. Apesar do baixo percentual de redução obtido em RWW sem glicose, alcançaram-se concentrações de ± 0.14 mg/L de Cr⁶⁺, que estão dentro dos limites permitidos (0.5 mg/L de Cr⁶⁺). A microscopia eletrônica de varredura mostrou alterações na parede da célula bacteriana e uma diminuição no tamanho, principalmente nas bactérias expostas a RWW. Os resultados nos permitiram propor a *B. cereus* B₁ como um microrganismo promissório para o uso em biorremediação de efluentes que contenham Cr⁶⁺.

Palavras-chave: biorremediação; efluentes industriais; glicose; metais pesados; galvanoplastia.

Jennifer Andrea Moreno Benavides

Biologist, Universidad del Valle, Colombia. Currently master student in Molecular Biology at the Vrije Universiteit Brussel, Belgium.

<https://orcid.org/0000-0001-7530-2212>

Enrique Javier Peña Salamanca

Received his PhD degree in Marine Sciences in 2000 from University of South Carolina, USA. Since 2002 is Full Professor at Universidad del Valle, Department of Biology. He is currently the Director of the Marine Sciences and Limnology Institute Incimar. He is also a distinguished member of the National Academy of Natural Sciences, Physics and Mathematics of Colombia. His research interests include plant physiology, applied phycology and bioremediation processes.

<https://orcid.org/0000-0002-5135-6424>

Neyla Benítez Campo

Currently associate profesor at Universidad del Valle, Department of Biology. Leader of the Research Group “Biology of Plants and Microorganisms”. Her main research interest is the microbial bioremediation of heavy metals and hydrocarbons, based primarily on the use of molecular tools and different methods to evaluated its toxicity on bacterias and yeast, identifying possible biotechnological alternatives for the treatment and prevention of soil and industrial wastewater contamination.

<https://orcid.org/0000-0002-4050-0435>