

Biogenic amines in rainbow trout, tilapia, and cachama fish, available for consumption in Nariño, southern Colombia

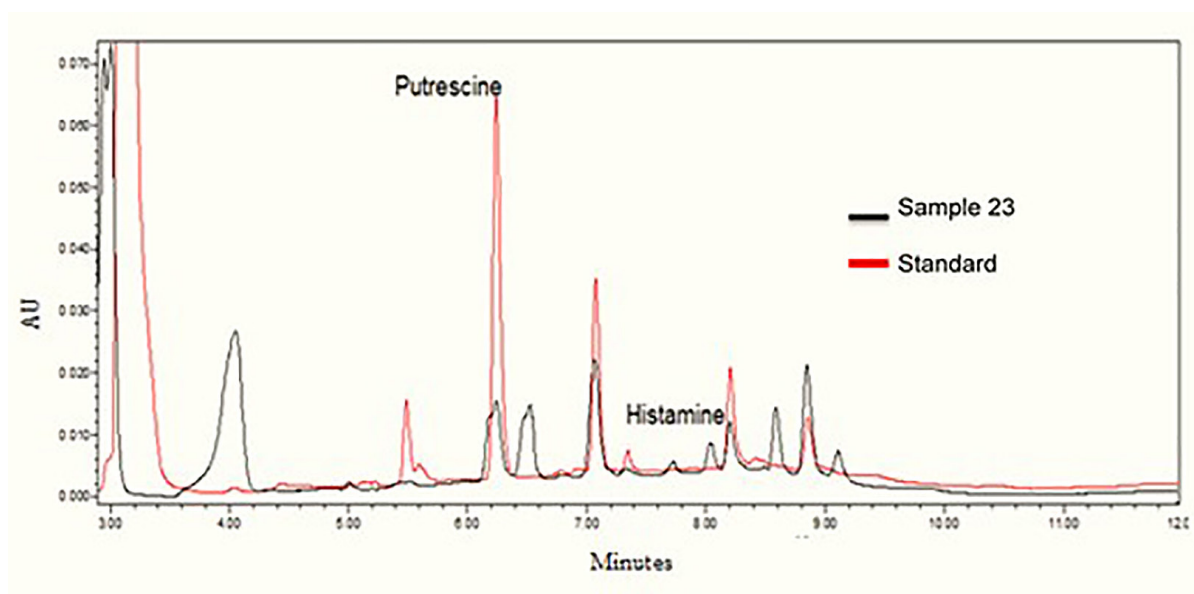


Figure S2.: Chromatographic profile, black line, of fish sample No. 23. This fish was killed by asphyxia and was kept for 10 days at 25 °C prior to muscle sample preparation and HPLC analysis. The reference profile, red line, corresponds to a standard solution of BAs at a concentration of 25 mg/L.