

Characterization of antibiotic-resistant *Escherichia coli* associated with urinary tract infections in Southern Colombia

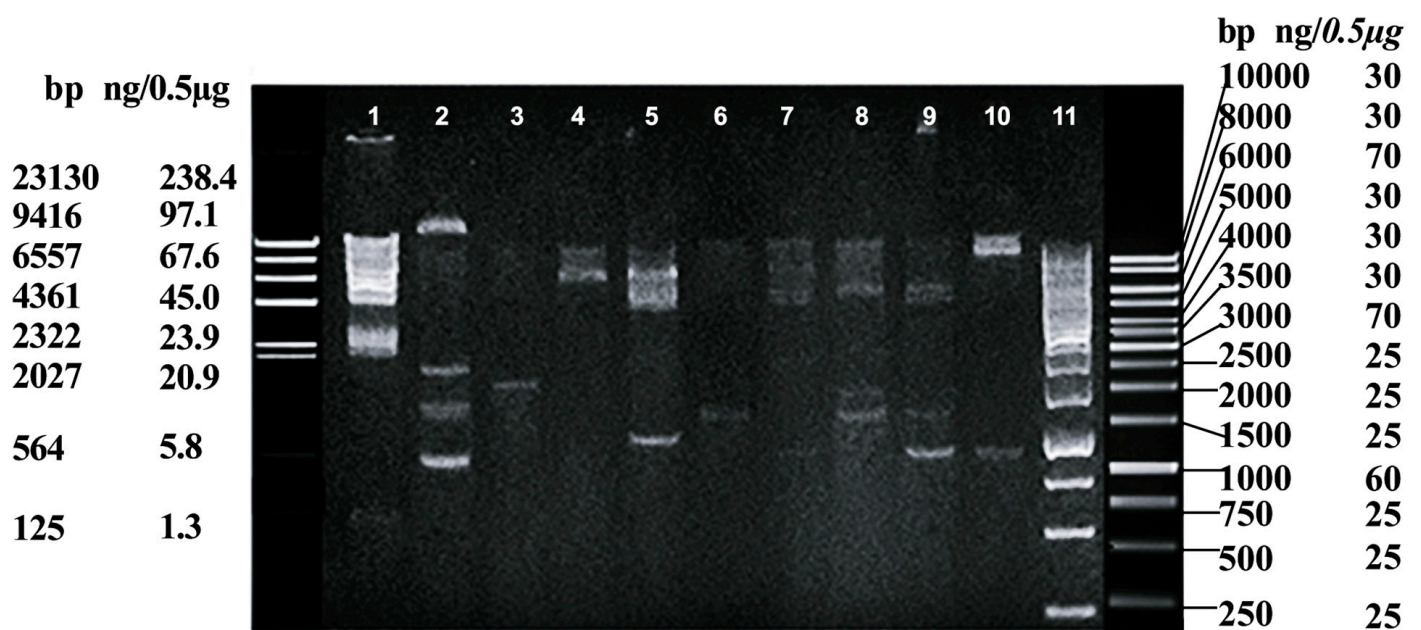


Figure S2.: Plasmid profile of the *E. coli* isolates. A 1.2 % agarose gel was run in 1X TBE buffer at 80 V for 1 hour and 30 minutes and treated with Gel Red (Biotium, USA). The gel was photodocumented in the Smart Doc Imaging Enclosure Benchmark Accuris E300 UV equipment at a wavelength of 302 nm. The molecular markers *Lambda HindIII*, and 1 kb (Promega) are observed in the first and last lanes, respectively; *E. coli* isolates 3, 5, 6, 9, 11, 13, 14, 16, and 18 are loaded in lanes 2 to 10, respectively.