

Characterization of antibiotic-resistant *Escherichia coli* associated with urinary tract infections in Southern Colombia

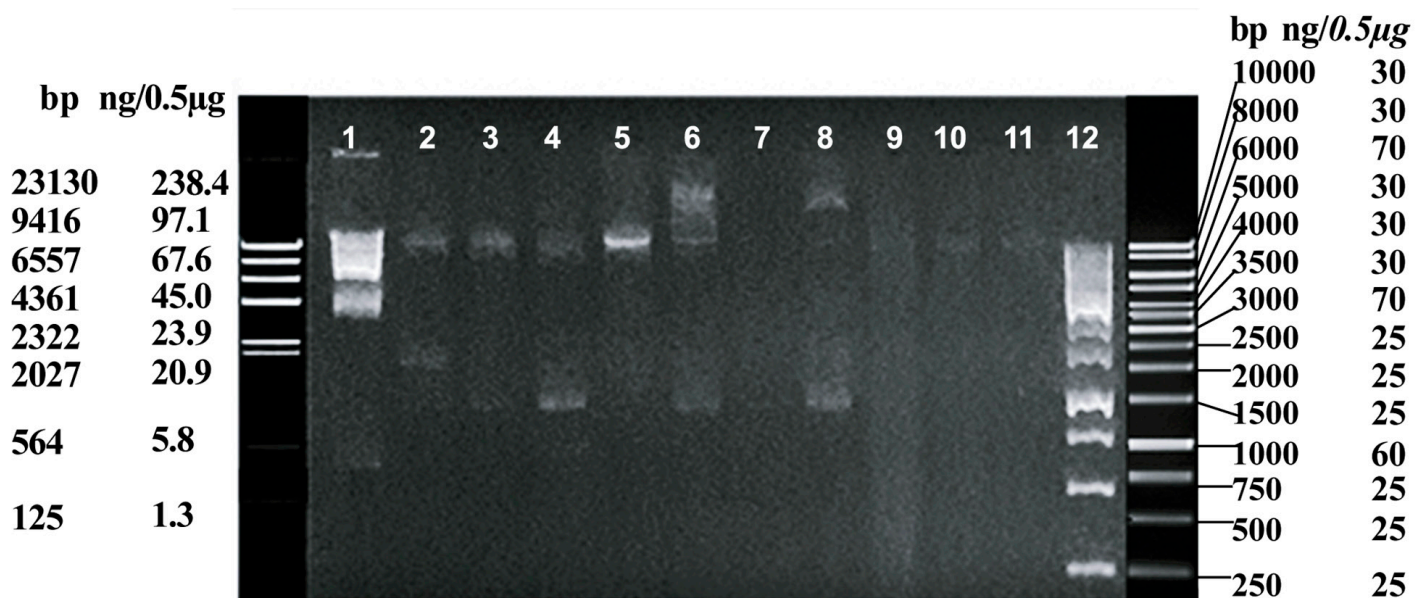


Figure S3.: Plasmid profile of the *E. coli* isolates. A 1.2 % agarose gel was run in 1X TBE buffer at 80 V for 1 hour and 30 minutes. The intercalant Gel Red (Biotium, USA) was used and photodocumented in the Smart Doc Imaging Enclosure Benchmark Accuris E300 UV equipment at a wavelength of 302 nm. The molecular markers *Lambda HindIII*, and 1 kb (Promega) are observed in the first and last lanes; *E. coli* isolates 19, 20, 21, 22, 26, 28, and 31 are loaded in lanes 2 to 8, respectively. Lanes 9-11 contain positive controls.